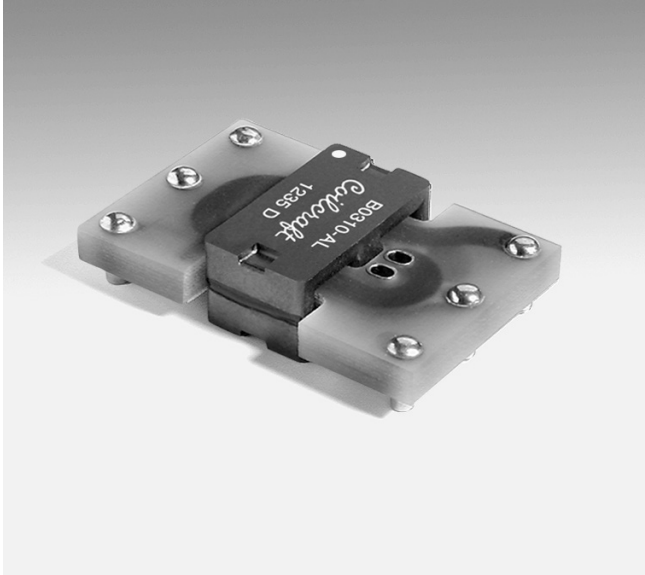


Planar Transformers

For National Semiconductor
LM5030 Controller IC



Less than 10 mm high, Coilcraft's planar transformers are ideal for use in high-current telecom power supply applications that require high efficiency in a low-profile package.

These transformers are designed specifically to perform with the National Semiconductor LM5030 Push-Pull Current Mode PWM Controller. They provide three different output ratings to suit a variety of applications. All offer 1500 Vrms primary to secondary isolation.

Coilcraft's A9785-B, A0153-A and B0414-A are output chokes and include an extra winding for auxiliary voltage supply. Our MSS6132-103 functions as the input filter choke in the same circuit. Refer to separate data sheets for additional information on these parts.

Request free evaluation samples by contacting Coilcraft or visiting www.coilcraft.com.

Part number ¹	Output power (W)	Input voltage range (V)	Output voltage (V)	Output current ² (A rms)	Primary inductance ³ min (mH)	Leakage inductance max (μH)	DCR max (Ohms)		Turns ratio pri : sec
							pri	sec	
A9784-BL_	33	36 – 75	3.3	10.0	1.30	3.50	0.850	0.016	6 : 1
A0152-AL_	35	36 – 75	5.0	7.0	1.30	2.50	0.850	0.018	4 : 1
B0310-AL_	60	36 – 75	12.0	5.0	1.30	2.50	0.850	0.060	2 : 1

1. When ordering, please specify **packaging** code:

B0310-ALD

Packaging: D = 13" machine ready reel. EIA-481 embossed plastic tape (250 parts per full reel). Quantities less than full reel available: in tape (not machine ready) or with leader and trailer (\$25 charge).

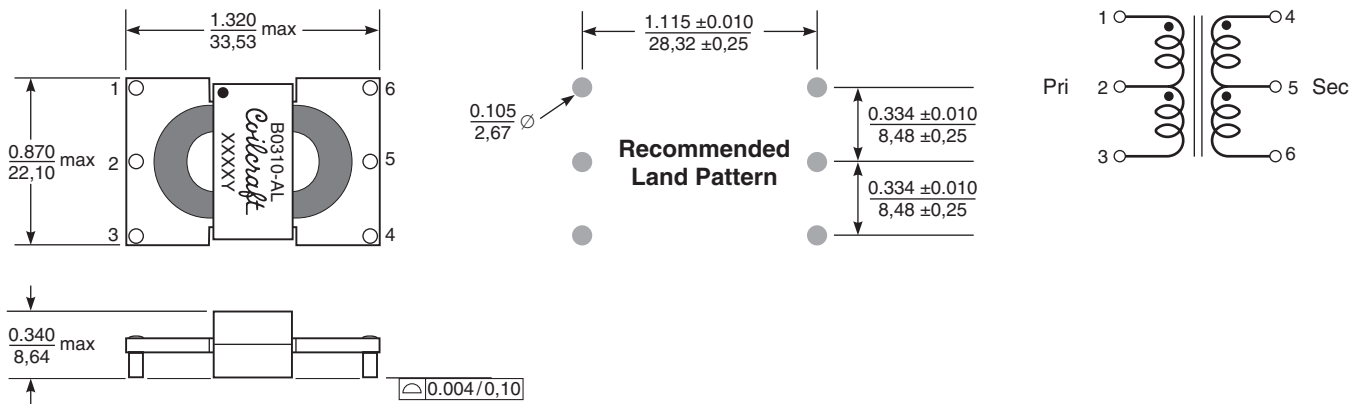
B = Less than full reel. In an effort to simplify our part numbering system, Coilcraft is eliminating the need for multiple packaging codes. When ordering, simply change the last letter of your part number from B to D.

2. 15°C temperature rise typical at output current.

3. Inductance measured between pins 1 and 3 at 250 kHz, 0.1 Vrms, 0 Adc.

4. Operating temperature range: -40°C to +85°C.

5. Electrical specifications at 25°C.



Dimensions are in $\frac{\text{inches}}{\text{mm}}$

Weight: 9.5 – 10.9 g

Terminations: Matte tin over nickel over brass

Tape and reel: 250/13" reel 56 mm tape

Coilcraft
www.coilcraft.com

US +1-847-639-6400 sales@coilcraft.com

UK +44-1236-730595 sales@coilcraft-europe.com

Taiwan +886-2-2264 3646 sales@coilcraft.com.tw

China +86-21-6218 8074 sales@coilcraft.com.cn

Singapore + 65-6484 8412 sales@coilcraft.com.sg

Document 305 Revised 07/19/13

© Coilcraft Inc. 2020

This product may not be used in medical or high risk applications without prior Coilcraft approval. Specification subject to change without notice. Please check web site for latest information.